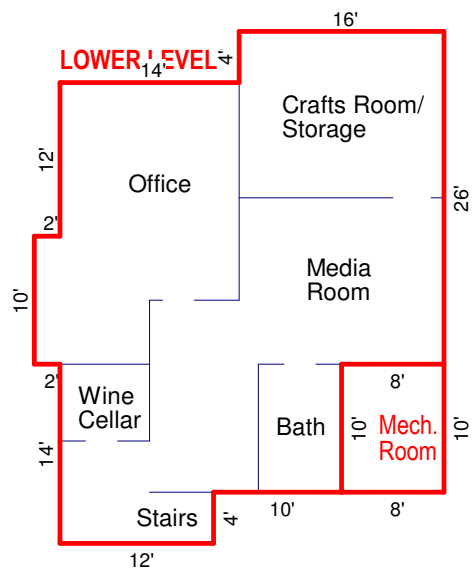
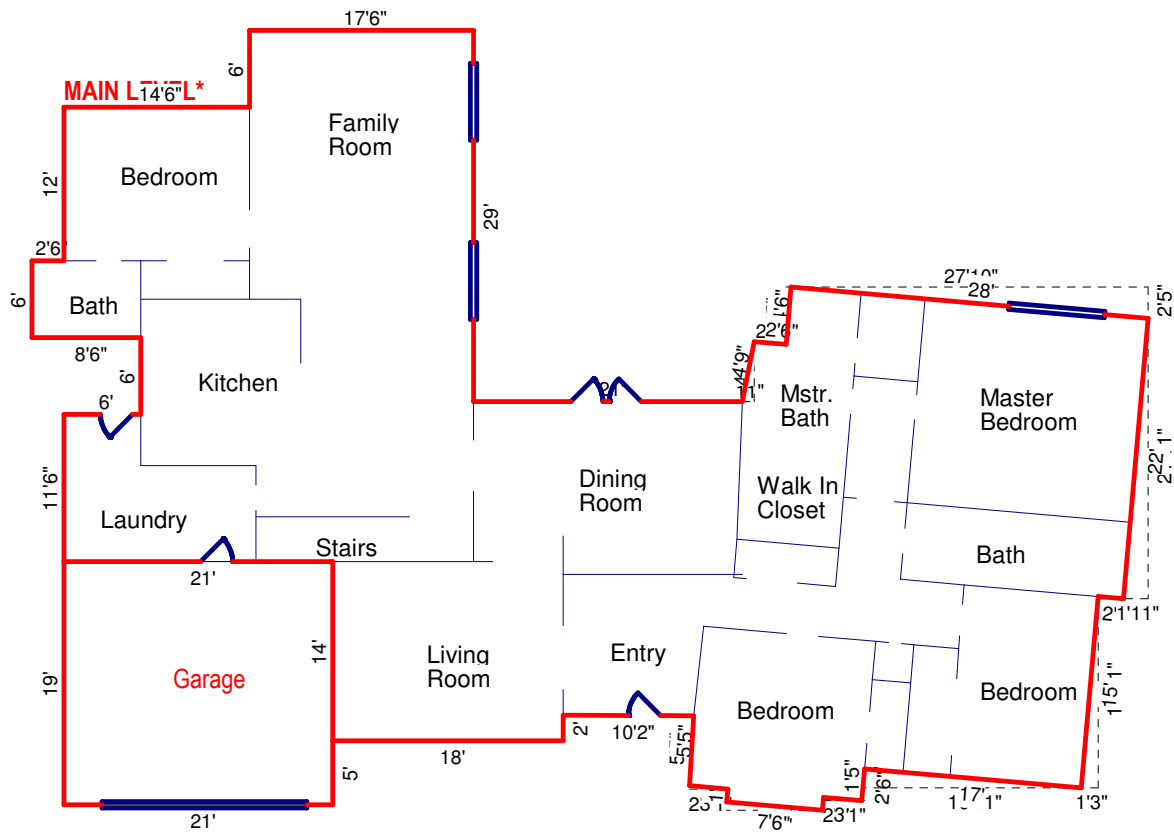


14 RAMONA DRIVE, ORINDA



Prepared by Adam M. Lehman
 CA State R.E. Appraiser
 AR003634, on 05/03/2019

MAIN LEVEL*

6	x	17.5	=	105
12	x	32	=	384
6	x	34.5	=	207
2.44	x	14.05	=	34.30
1.82	x	28.11	=	51.28
5	x	26	=	130
0.22	x	1.27	=	0.28
0.22	x	28.11	=	6.12
4.46	x	30.89	=	137.88
1	x	78.09	=	78.09
11.5	x	83.54	=	960.75
2.74	x	61.92	=	169.37
9.26	x	59.39	=	550.21
0.17	x	1	=	0.17
2	x	18	=	36
0.05	x	35.87	=	1.67
4.15	x	30.71	=	127.44
1.31	x	13.57	=	17.83
1.48	x	8.53	=	12.64
0.26	x	12.05	=	3.15
0.65	x	10.54	=	6.89
0.34	x	7.53	=	2.58
0.26	x	1.51	=	0.39
0.65	x	3.76	=	2.46
Subtotal*				3025.52 SF

Garage

19	x	21	=	399	SF
Total*				3025.52	SF

LOWER LEVEL*

2	x	10	=	20	
12	x	36	=	432	
2	x	32	=	64	
8	x	36	=	288	
8	x	26	=	208	
Subtotal*				1012	SF

Mech. Room

8	x	10	=	80	SF
Total*				1012	SF

*** Total G.L.A. 4037.52 SF**